



1

2

3

4

7X
30

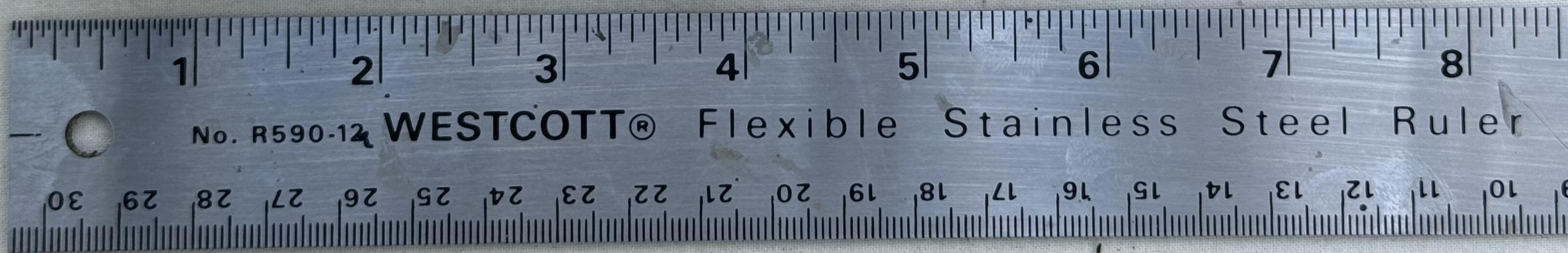
2

Handwritten scribble

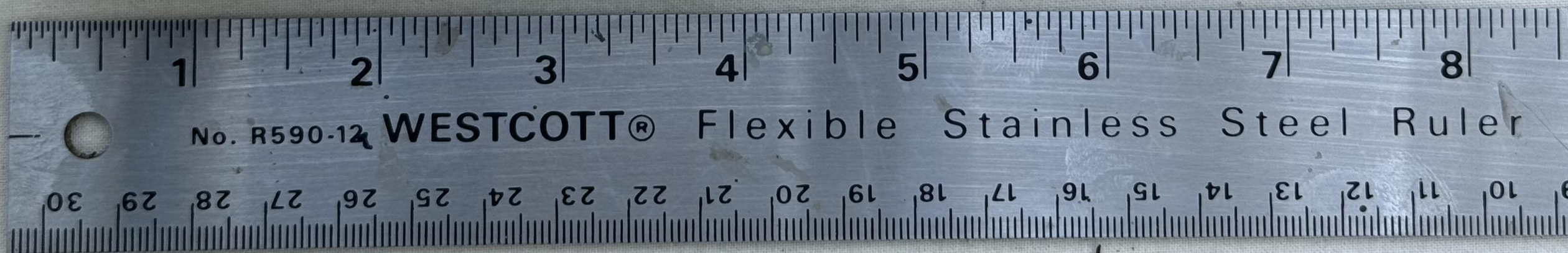


Go forth thou little volume
I leave thee to thy fate.
Be love and friendship truly
Thy leaves I dedicate
Winn Powers

Autographs

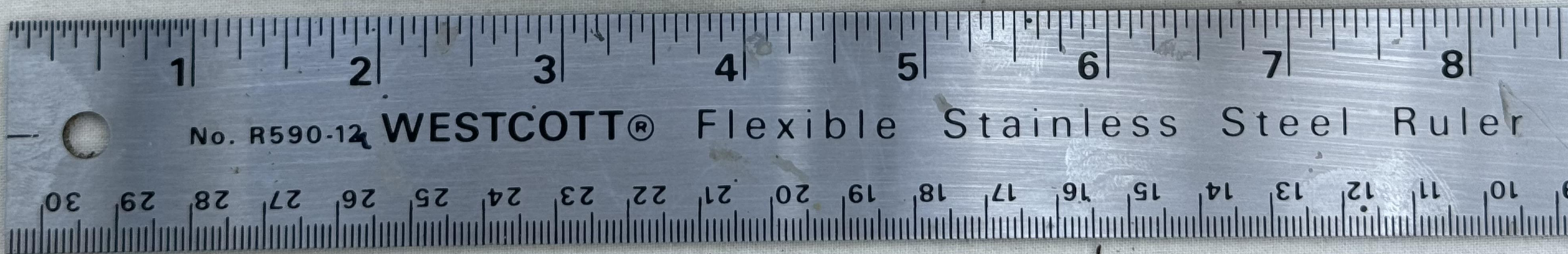


Miss Edna Wood.
Nes.
Dec. 25, 1880. Ind.





My Dear Edna
Be kind to all you chance to meet
In field or lane or crowded street -
Anger and pride, are both unwise
Vinegar never catches flies
Your Mamma



To, Edna

There is a charm half undefined
That makes the plainest features fair
The Peerless Beauty of the mind
The disposition sweet and rare
Methu Indiana

Feb 20th 1881

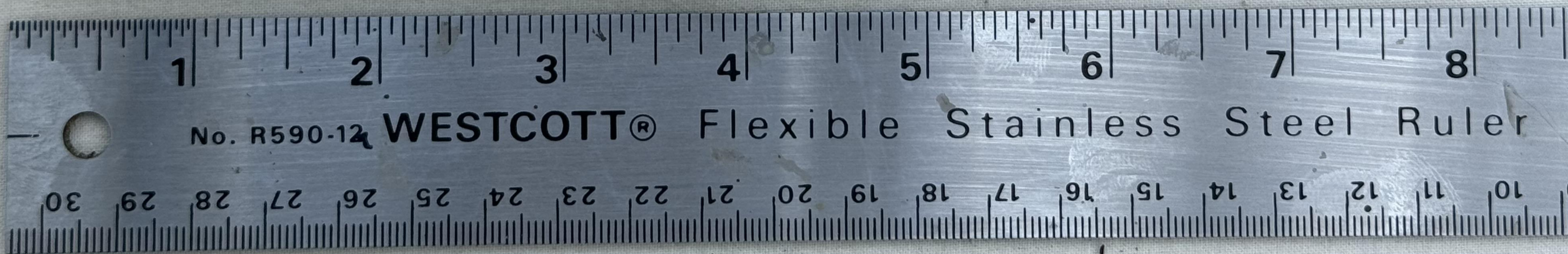
B. Allman

To Edna

"Fair and flowery be thy way
Bright the skies above thee
And fairs still each coming day
To thee and those that love thee

Yours Corrine
Elmore Cameron

Methu Ind. March 24th 1881



Edna Wood

May friendship and truth

Be with you in youth

And eat up and say

Cherish your old age

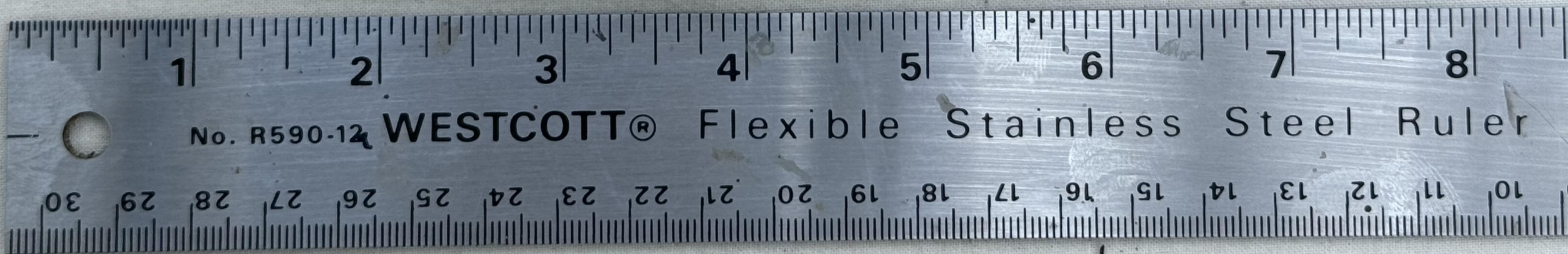
Edna Wood

Where good works and deeds
Have ripened on the field.

On this leaf in memory prest,

May my name forever rest.

Winn Powers



To Edna

Are we sowing seeds of kindness
They shall blossom bright & long
We can never be too careful
What the seed our hands shall ^{sow}
But a glad or welcome fruitage
Wait us at the harvest day

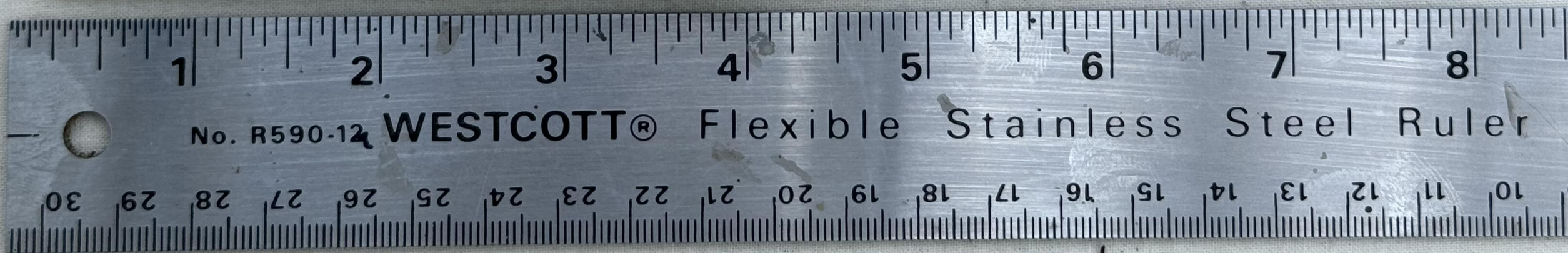
Maries Feb 20th 1881 Ellen Allman



To my young friend
Edna Wood. may your li^{fe}
be like the day - more beau^{ti}
in the evening; like the Sum^{mer}
aglow with promise; and, like
Autumn, rich with the golden
sheaves, — — —

To Edna
Remember me when far away.
Remember me on your wedding day.
Remember me for fifty years. *Edna*
And send me a piece of your wedding

Your friend
Effie Caldwell



*Edna and
Remember me*



When in the snow death lay wait
The cold wind silent lay the
And hear birds and those of
me that is given faithful
Friend waited to
Your friend
Eva Winner

1

2

3

4

5

6

7

8

No. R590-12 WESTCOTT® Flexible Stainless Steel Ruler

29

28

27

26

25

24

23

22

21

20

19

18

17

16

15

14

13

12

11

10

Compliments of
your friend

Ollie R. LaPala



Thomas
Wood

1

2

3

4

5

6

7

8

No. R590-12 WESTCOTT® Flexible Stainless Steel Ruler

30 29 28 27 26 25 24 23 22 21 20 19 18 17 16 15 14 13 12 11 10

Mitz Feb 3/89

To Edna.

Remember me when this
you see
when life, to you is given
and if on earth we meet no more
Oh may we meet in Heaven.

From your old friend.

Mary LaRue.

No. R590-12

WESTCOTT® Flexible Stainless Steel Ruler

"The good and the kind
By kindness their love ever proving
Will dwell with the pure and
the loving." Dode Finch.

Feb. 3, 1881.

No. R590-12 WESTCOTT® Flexible Stainless Steel Ruler

To Edna

Honor thy Father; and
Mother in the day of
thy youth — — —

Your Aunt

Angola Ind Feb 25⁸³

There never was a cloud so thick
and black, but it might some-
time break And on its track the
glorious sun come streaming.
Your teacher — Rosa C. Hoose.

No. R590-12 WESTCOTT® Flexible Stainless Steel Ruler

Edna Lwood.

think of me when far
away and I will you.

Hugh. G. Albert
Metz Ind. Jan 18, 1882.

No. R590-12 WESTCOTT® Flexible Stainless Steel Ruler

in friendship love and
truth

Lora Muller
Mts 1888

1

2

3

4

5

6

7

8

No. R590-12

WESTCOTT® Flexible Stainless Steel Ruler

30

29

28

27

26

25

24

23

22

21

20

19

18

17

16

15

14

13

12

11

10

To ednie

I will be a good boy if you
will own me for your friend

Herba Finch

Feb 3 1881

1

2

3

4

5

6

7

8

No. R590-12

WESTCOTT® Flexible Stainless Steel Ruler

30

29

28

27

26

25

24

23

22

21

20

19

18

17

16

15

14

13

12

11

10

Miss Edna Wood

In after years may
fond recollections of
thy youth return.

R. R. Alwood

1

2

3

4

5

6

7

8

No. R590-12 WESTCOTT® Flexible Stainless Steel Ruler

30

29

28

27

26

25

24

23

22

21

20

19

18

17

16

15

14

13

12

11

10

It is sweet to think as our
mei glide of down times
swift uncertain tide
with ears of life oppressed
That for above your star lit
dome awaits us there a happy
home of home of endless rest

Lemarie Robinson

1

2

3

4

5

6

7

8

No. R590-12 WESTCOTT® Flexible Stainless Steel Ruler

30 29 28 27 26 25 24 23 22 21 20 19 18 17 16 15 14 13 12 11 10

To Edna

Alas for thee what shall I
Write? my thoughts of late have
taken flight - but Friendship have a
line for thee a line which says
Remember me.

Your friend
Metz Lud. Ella R.

No. R590-12 WESTCOTT® Flexible Stainless Steel Ruler

Miss Edna:

Please accept compliments
of your friend,
Burdett Goodale.

Dec. 28th, 1882.

Metz, Ind.

No. R590-

Steel Ruler

Miss Edna:

Please accept compliments
of your friend,
Burdett Goodale.

Dec. 28th, 1882. Metz, Ind.

No. R590-12 WESTCOTT® Flexible Stainless Steel Ruler

Edna

If I within thine heart could look
And find one little vacant nook
I'd plant within that lovely spot
The single flower. Forget me not.
Your friend
Ethel W.

March 5th 1883.

No. R590-12 WESTCOTT® Flexible Stainless Steel Ruler



Desire not to live long, but to
live well; How long we live, not years,
but actions tell

October 5 1881 Emma Stullman



"To Edna." Web. Feb. 3rd 1881.

"I pray, that thou mayest ever be,
As bright and pure as now,
And may time ever leave as free,
From care thy sunny brow."

"Is the wish of your
school-mate."

Jessie Richardson.

No. R590-12 WESTCOTT® Flexible Stainless Steel Ruler

To Edna

May your life be as spotless as the snow
And your heart be light wherever you go
That you may be happy and friends

prove true

Are the wishes that I wish for you
Winnie Richardson

Mez. and Feb. 3, 1881.

No. R590-12 WESTCOTT® Flexible Stainless Steel Ruler

Dear friend,

When far away and
friends are few,
Think of me and I

will you.
Your ~~next to my dearest~~
~~friend~~ friend Blanche.

Jan. 16, 1882.

Remember him, Edna.

"Like the days this life we're living,
Some are dark and stormy too
Sorrow gather 'er at mid day,
Silently as evening dew."

Effie C. Hoove.

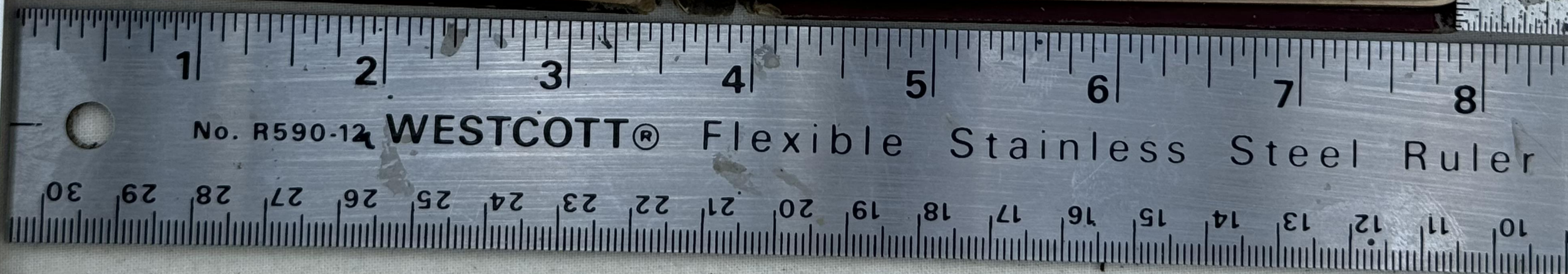
Feb. 2, 1881.

No. R590-12 WESTCOTT® Flexible Stainless Steel Ruler

Complements to
Miss Edna Wood
by her uncle
Alonzo Powers

No. R590-12 WESTCOTT® Flexible Stainless Steel Ruler

May we this life improve
Go mourn for Errors Past
And live this Short Revolving day
As if it were our last
Charlie Powers



Full many a gem of purest ray serene
The dark unfathomed caves of ocean
bear

Full many a flower is born to blush
unseen
And waste its sweetness on the desert ^{air}

Dora Gilbert

1.7.1881.

No. R590-12 WESTCOTT® Flexible Stainless Steel Ruler

Dear Edwin

I will not wish thee grandeur
I will not wish thee wealth
But only a contented heart
Peace comfort and health
Fond friends to love thee dearly
And honest friends to chide
And faithful one to cheer ^{thee} for
Whatever may betide.

Your Cousin
Winnie Rose
Big Rapids

Wet. Aug 9. 1881.

No. R590-12 WESTCOTT® Flexible Stainless Steel Ruler

Oh Edna Remember the
Spirits immortal for it
Theres weal or theres woe
Let thy soul's strings ever
Be upward for you must ^{rejoice} ~~rejoice~~ ^{now}

Feb 3th 1881

Eunice Corbale

No. R590-12 WESTCOTT® Flexible Stainless Steel Ruler

"To Edna.



Nothing grate is lightly won,
Nothing won is lost;
Every good deed, nobly done,
Will repay the cost.

Net's Inst.

Feb. 24th 1881.

Mattie Allman

No. R590-12 WESTCOTT® Flexible Stainless Steel Ruler



To Edna,
True happiness if
understood,
consists alone in doing
good.

Feb. 21. 1881. Jimmie Mann.



Compliment of

Annie Howell

Feb. 2nd

1 2 3 4 5 6 7 8

No. R590-12 WESTCOTT® Flexible Stainless Steel Ruler

9 10 11 12 13 14 15 16 17 18 19 20 21 22 23 24 25 26 27 28 29 30

If my name you wish to see
look on page three,

1 2 3 4 5 6 7 8

No. R590-12 WESTCOTT® Flexible Stainless Steel Ruler

30 29 28 27 26 25 24 23 22 21 20 19 18 17 16 15 14 13 12 11 10 9



No. R590-12 WESTCOTT® Flexible